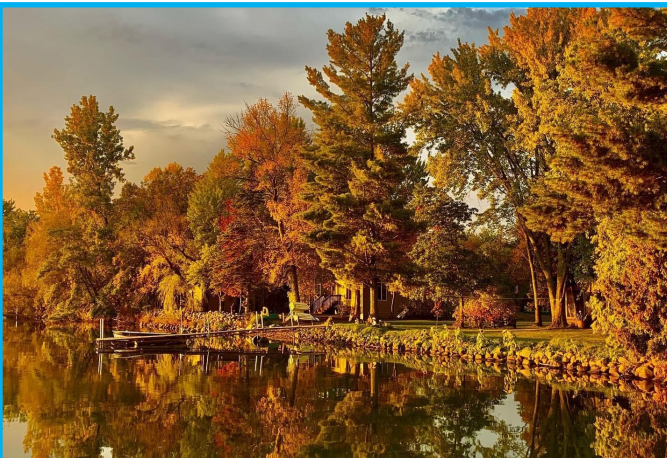
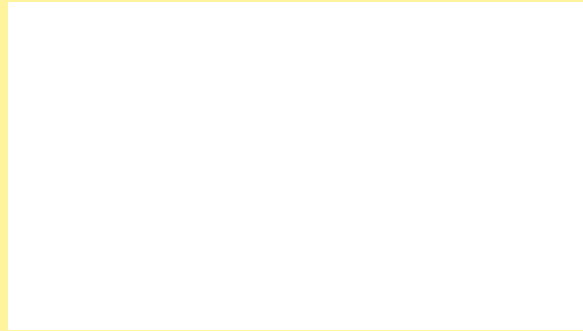


# Land Protection Benefits

- Protect Minnesota's important wildlife habitat, water quality, and beautiful spaces.
- Preserve your family's legacy on the land.
- Become eligible for cost-share to reforest your lands.
- Receive financial compensation for your forested land while retaining your ownership.
- Access resources and expertise from conservation organizations and government agencies to help manage and care for your land effectively.



## To get started contact:



### Funding:

This funding is eligible to landowners within the Rum River Watershed. The Rum River Watershed Partnership is part of Minnesota's "One Watershed, One Plan" effort. Their purpose is to implement a management plan to protect and restore water resources.

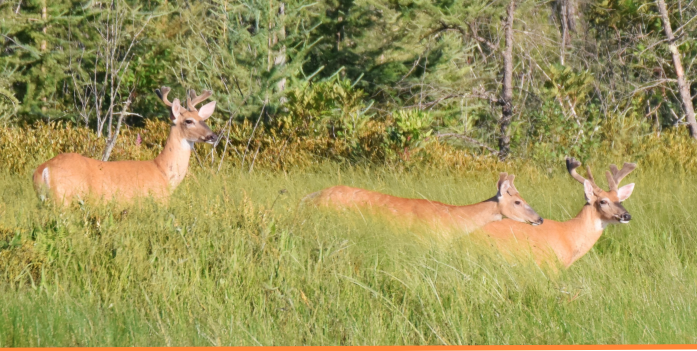
Funding for this project was provided by the Minnesota Environment and Natural Resources Trust Fund as recommended by the Legislative-Citizen Commission on Minnesota Resources (LCCMR).



Map of the Rum River Watershed

# Private Land Conservation & Stewardship





## Sustainable Forest Incentive Act (SFIA)

SFIA offers direct incentive payments to property owners to promote the sustainable use of woodlands. Property owners receive an annual payment for each acre of qualifying forest land they enroll in the program. Payments are adjusted each year based on the tax assessed land value. In return, the landowner agrees not to develop the land and to adhere to a Stewardship Plan throughout their participation. Plans are customizable and may allow for limited timber harvest. Landowners may choose to enroll their land for a minimum duration of 8, 20, or 50 years.

SFIA is:

- ⌘ Not permanent.
- ⌘ Provides payment each year of the contract length.



## Conservation Easements

A conservation easement safeguards the natural value of a property through voluntary and permanent land use restrictions. Lands protected by a conservation easement remain in the landowner's private ownership. Low impact recreational uses, such as camping and hunting, are still permitted, and public access is not required. Conservation easements stay with the land when ownership changes, ensuring permanent protection for generations. Land placed in a conservation easement will receive a one-time payment for 60% of the county assessed land value.

Conservation easements are:

- ⌘ Permanent.
- ⌘ Provides a one-time up front payment for 60% of the land value.

*Land enrolled in SFIA can be entered into a conservation easement.*

## Forest Management Practices

There is funding available for a variety of forest management practices. Funding for some activities are dependent on the land's enrollment in SFIA or a conservation easement.

Eligible practices include:

- ⌘ Forest thinning
- ⌘ Stand improvements
- ⌘ Reforestation
- ⌘ Forest Stewardship Plans

**These programs are flexible to suit your unique needs! Staff will work with you to identify your goals and accommodate your preferences.**